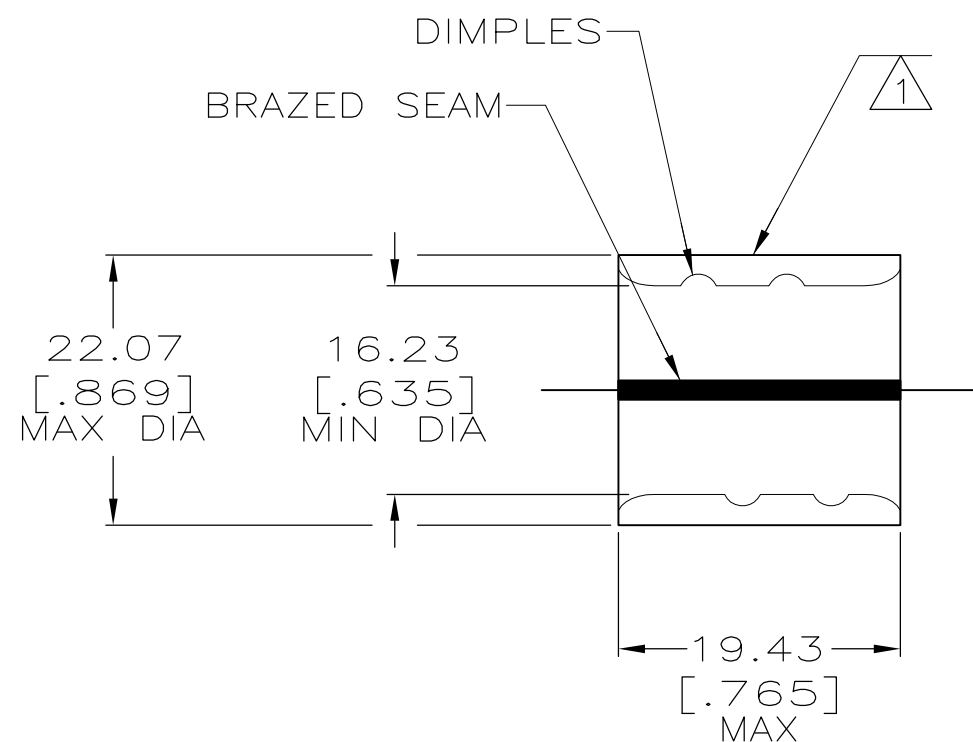


THIS DRAWING IS UNPUBLISHED. RELEASED FOR PUBLICATION
 © COPYRIGHT - BY TYCO ELECTRONICS CORPORATION. ALL RIGHTS RESERVED.

LOC	DIST	REVISIONS					
G	14	P	LTR	DESCRIPTION	DATE	DWN	APVD
			F1	REV PER ECR 08-010969	01MAY08	JR	RL

AMP WIRE RANGE	Listed FILE E13288	LR7189 Certified
4/0 AWG SOLID OR STRANDED	4/0 AWG SOLID OR STRANDED	4/0 AWG SOLID OR STRANDED



- 1 STAMP AMP 4/0W* 125 LOCATE APPROX AS SHOWN
- 2 MATERIAL THK: 2.59 ±0.08 [0.102 ±0.003]
- 3 TIN PL 0.00254 [0.000100] MIN THK PER ASTM B545.
- 4 CLEANED, UNPLATED
- 5 P/N 1-36948-1 IS NOT UL OR CSA LISTED.
- 6 STAMP FOR MANUFACTURING LOCATION OR CODE PERMISSIBLE.
- 7 PREPRODUCTION - FASR REQ
- 8 NOT UL OR CSA LISTED
- 9 0.00254 [0.000100] MIN TIN-LEAD (60-40) PLATE PER SAE-AMS-P-81728
- 10 PRELIMINARY - NOT FOR PRODUCTION

9	-	LOOSE PIECE	8 10	36951-2
4	-	LOOSE PIECE	5 7	1-36951-1
3	-	LOOSE PIECE		36951
FINISH	QTY	PACKAGING TYPE	PART NO.	

AMP INCORPORATED CUSTOMER SERVICE SYSTEMS		MAX RECOMMENDED OPERATING TEMPERATURE: 170°C	THIS DRAWING IS A CONTROLLED DOCUMENT.		DWN DK SCHRUM 5/24/93	Tyco Electronics Corporation Harrisburg, PA 17105-3608				
FOR ADDITIONAL PRODUCT INFORMATION OR COPIES OF DRAWINGS AND TECHNICAL DOCUMENTS	PRODUCT INFORMATION CENTER 1-800-522-6752	VOLTAGE RATING: N/A	DIMENSIONS: MM [INCHES]	TOLERANCES UNLESS OTHERWISE SPECIFIED:	CHK RD HEIM 1/27/94	NAME SPLICE, PARALLEL, SOLISTRAND				
FOR APPLICATION TOOLING INFORMATION	TOOLING ASSISTANCE CENTER 1-800-722-1111	CIRCULAR MIL AREA: 96.3-117.0mm² [190,000-231,100] SOLID OR STRANDED		0 PLC ± - 1 PLC ± - 2 PLC ± 0.20[.008] 3 PLC ± - 4 PLC ± - ANGLES ± -	APVD JL MECKLEY 1/27/94	APPLICATION SPEC				
FOR ORDER ENTRY	1-800-526-5142	THIS DRAWING IS A CONTROLLED DOCUMENT FOR AMP INCORPORATED. IT IS SUBJECT TO CHANGE AND THE CONTROLLING ENGINEERING ORGANIZATION SHOULD BE CONTACTED FOR THE LATEST REVISION.	MATERIAL COPPER PER ASTM B-152	FINISH SEE TABLE	PRODUCT SPEC	SIZE A3	CAGE CODE 00779	DRAWING NO G-36951	RESTRICTED TO	
					WEIGHT -	CUSTOMER DRAWING		SCALE 2:1	SHEET 1 OF 1	REV F1